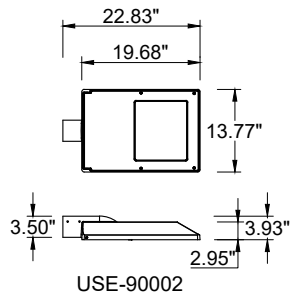


INSTALLATION AND SERVICE MANUAL

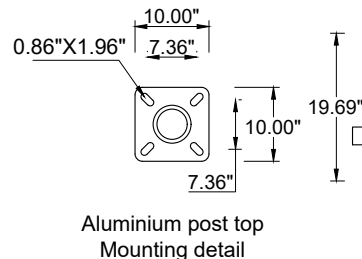
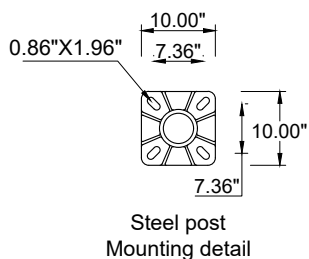
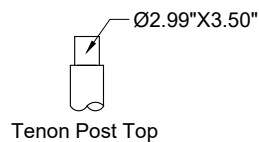
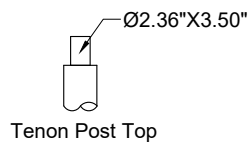
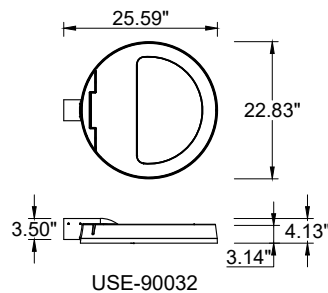
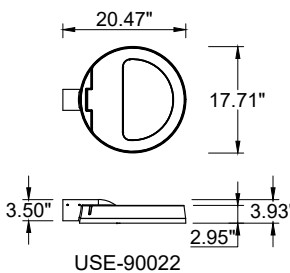
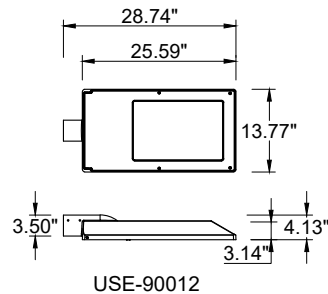


For Installation of Steamer Street and area lighting.
Model. USE-90002, USE-90012, USE-90022, USE-90032 & Accessory

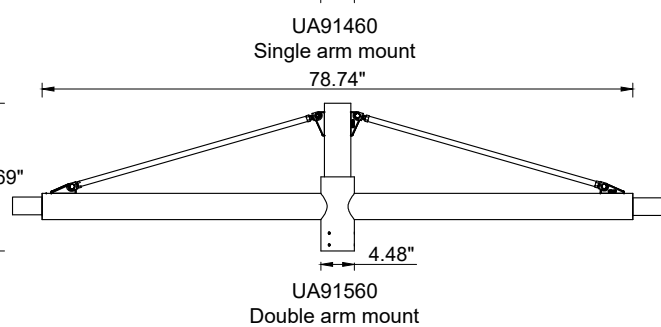
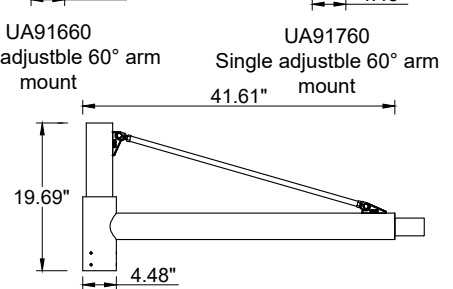
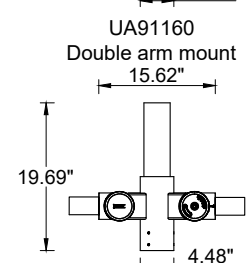
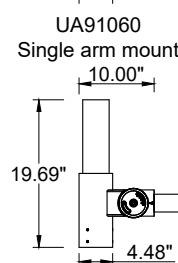
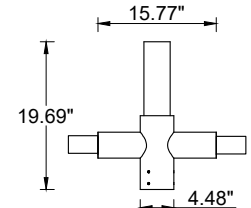
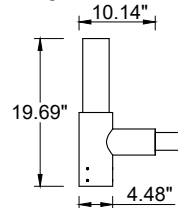
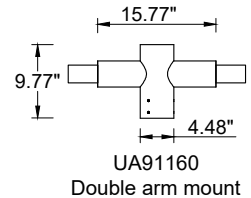
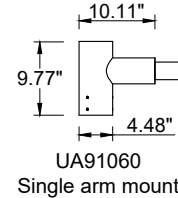
Product drawing (dimensions)



SUITABLE FOR WET LOCATIONS



ACCESSORIES



Notice to Installer

Wiring Instruction ⚠ Warning:

- Risk of Fire and Electrical Shock, This fixture must be installed only by a qualified electrician, Installation must adhere to the National Electrical Code (NEC) and all applicable local and federal regulations.
- Always disconnect power before servicing the fixture.

Ligman Lighting USA

7144 NE Progress Court, Hillsboro
Oregon, 97124, USA
Tel : 503 645 0500 | Fax : 503 645 8100

www.ligmanlightingusa.com

USE-90002 3/14/2025-DZ
1/2

FM-TS-13-1/13-05-2563/Rev.6

